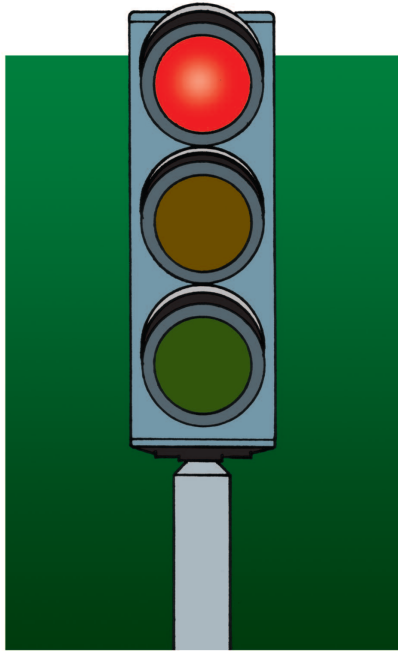


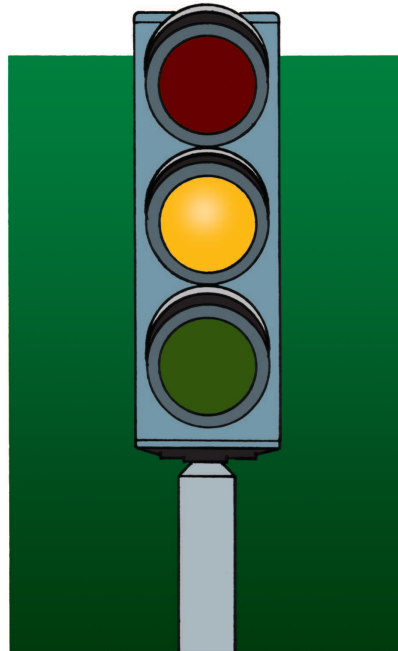


TRAFFIC LIGHT SIGNALS

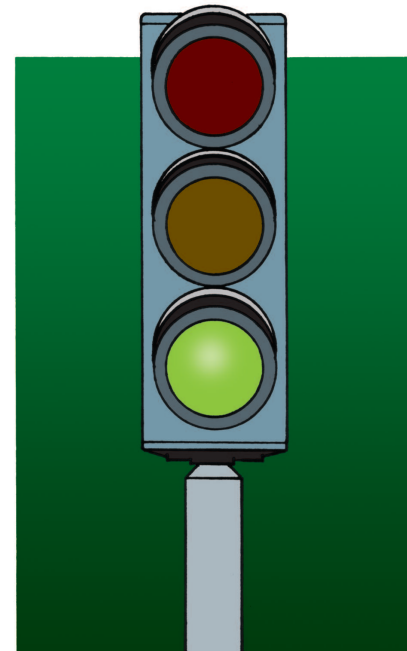
AT JUNCTIONS AND OTHER LOCATIONS



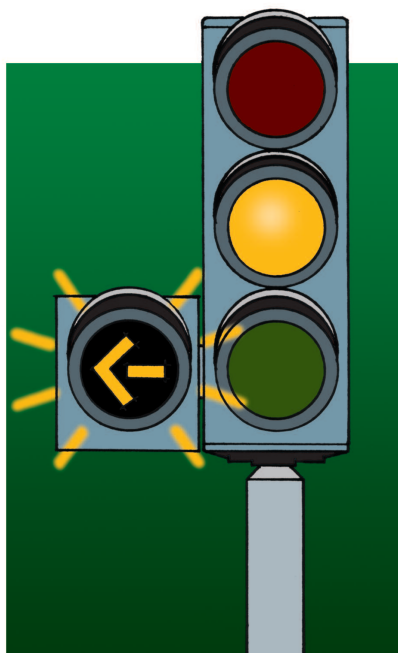
RED means 'Stop',
wait behind the stop line



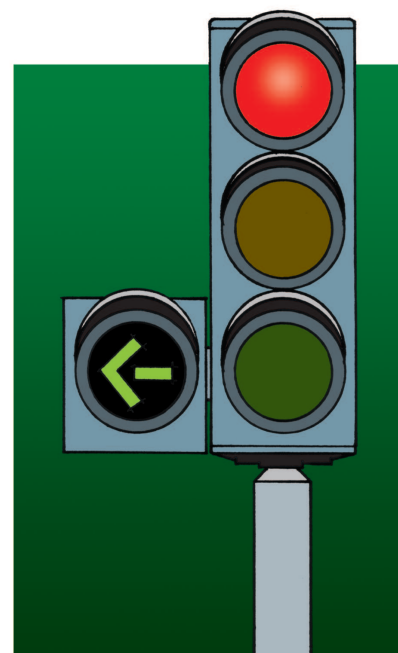
AMBER also
means 'Stop'



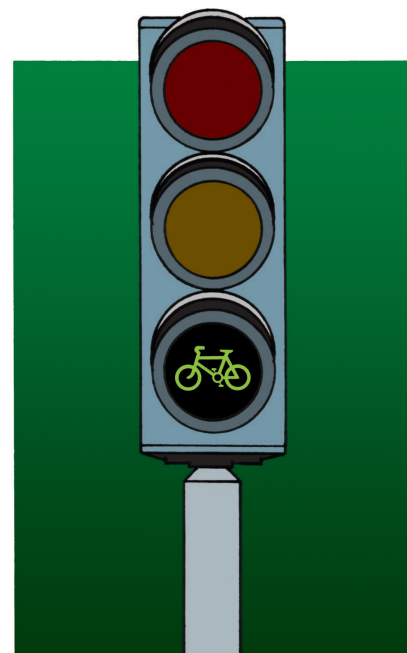
GREEN means you
may go if it is safe
to do so



At some junctions
you may see a
flashing amber arrow.
This indicates that you
must yield to traffic
coming from the right.
You must also give way
to pedestrians crossing.



If there is a
green arrow
you can go in the
direction shown if
it is safe to do so.



Toucan crossings
for cyclists only.
This is a controlled
crossing for cyclists,
usually provided
alongside controlled
pedestrian crossings.