



## STAGE 1 SESSION 6

# TRAFFIC SIMULATION

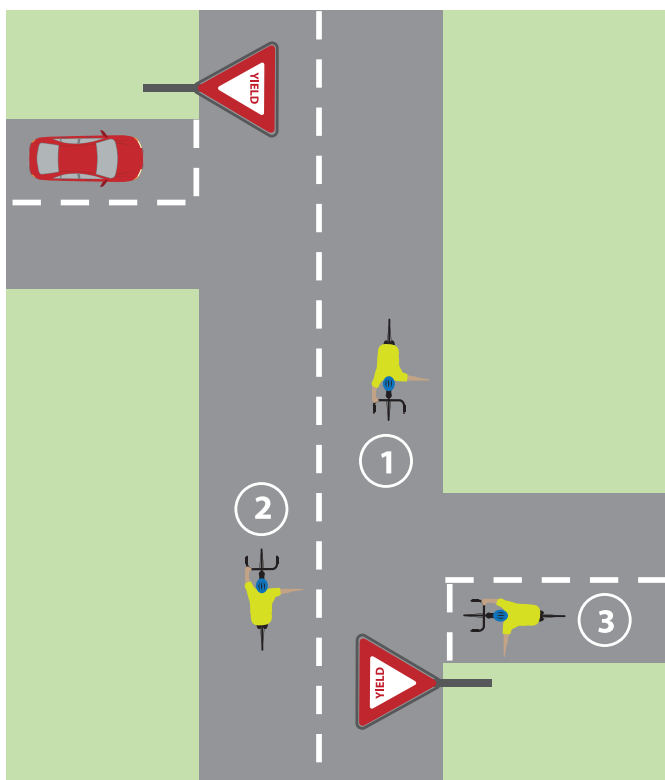
## AIMS & OUTCOMES

Two-way traffic and group cycling.

This session covers:

- Safe riding in a simulated journey.
- Two-way traffic in a changing traffic simulation.
- Right of way.
- Scenarios to look out for.
- Cyclists need to analyse, assess and act for themselves, rather than relying on others to act in the interests of their safety.

### Right of Way



## TECHNIQUES FOR CYCLING IN TRAFFIC

- **When** is it **appropriate** to **overtake** other vehicles?
- **When** is it **appropriate** to make a **u-turn**?
- **When** is it **appropriate** to cycle **two abreast**?
- **Never** blindly **follow another** trainee at a junction.
- **Covering the brakes** on the approach to a junction in case there is a need to stop to avoid someone else's unexpected action.
- **Self-responsibility** – a rider should always check the environment for themselves and should never trust anyone else with their safety.
- Signals are to advise other road users of a change of position or direction.
- Approaching a **bad bend**, traffic needs to **slow down**, but a **signal is not necessary**.

### Right of Way: Who Goes?

**Rider 1** is not crossing anyone else's road space and is on the main road with first right of way.

**Rider 2** is crossing rider 1's road space and must wait until that rider turns or moves on.

**Rider 3** is crossing the road space of both riders 1 and 2 and must wait until they turn or move on.